



FLASH BASE HINGES

Functions

Two-handed hinge for aluminium casement window and door fixtures with central gasket seal.

Technical Features

Supplied preassembled to enable fast installation and faultless positioning of the hinge on already assembled fixtures.

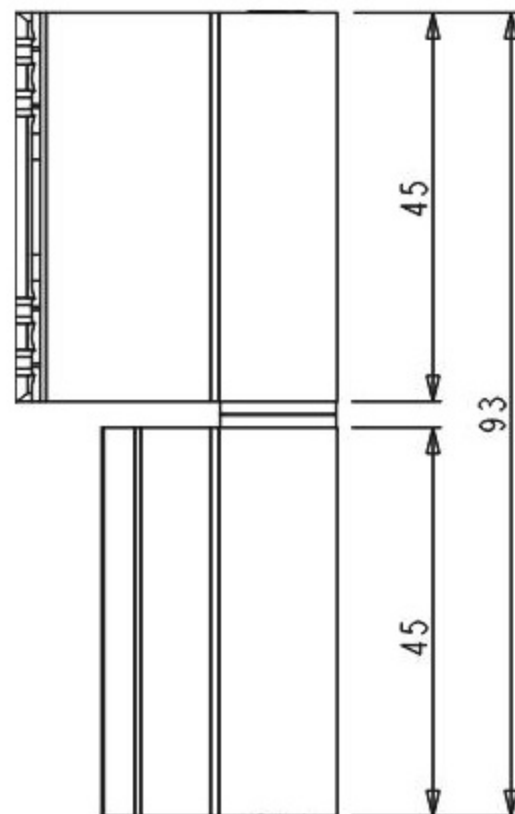
Special fixing plates, preassembled with the hinge bodies (Giesse RAPID system), enable fast installation and faultless positioning of the hinge on already assembled fixtures.

The FLASH BASE hinge is fitted extremely quickly to the sash and frame, even when the fixture has already been assembled.

The particular geometry of the hinge and of the plate enables swift and simple application to the already assembled fixture, and faultless positioning of the hinge when fixing the screws.

Hinges 00120 00122 00123 00128 and 00259 are certified to EN1935:2002 and classified for windows typified by average intensity of use (use category 2* - average use) with high resistance to fatigue and wear (durability grade 7* - 200,000 test cycles).

* Complies with EN 1935



Materials

Extruded aluminium hinge bodies
Stainless steel pin, screws and fixing plates
Polyamide bushes

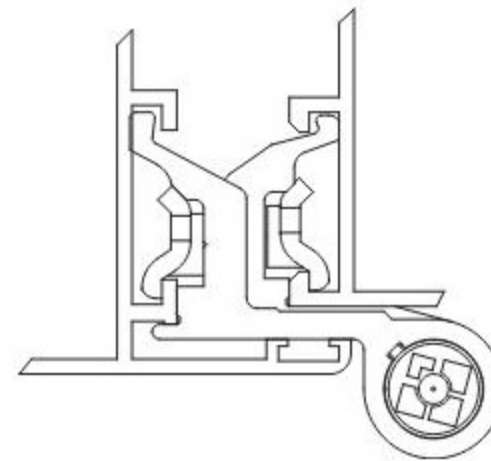
Capacities

With 2 FLASH BASE hinges: 75 kg

With 3 FLASH BASE hinges: 85 kg

assuming fixtures of 2000 mm height and 1000 mm width.

Side profile cross-section



third sash cross-section

